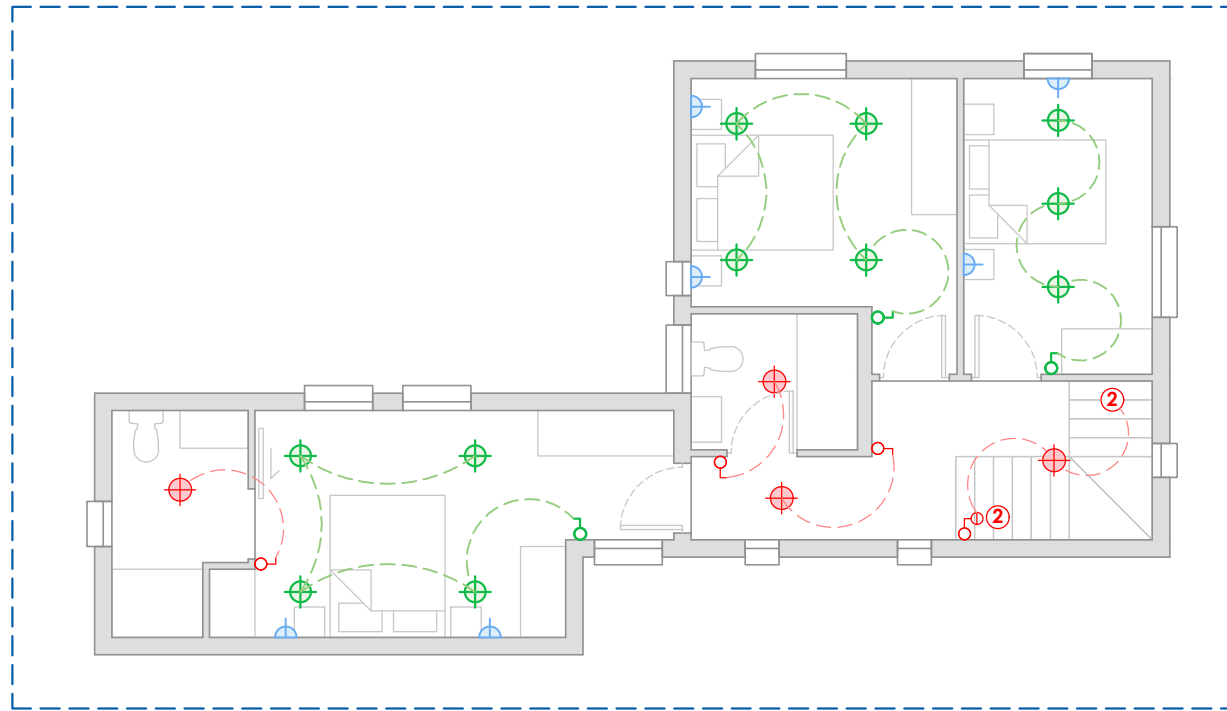


ELECTRICAL & LIGHTING LEGEND		
	LED DOWNLIGHT WITH WARM WHITE BULB	
	CEILING MOUNTED LIGHT	
	EXTERNAL WALL LIGHT - 2200mm	
	HEAT RESISTANT LIGHT IN BRAAI	
	FLUORESCENT LIGHT	
	SINGLE WAY LIGHT SWITCH - 1100mm	
	TWO WAY LIGHT SWITCH - 1100mm	
	EXTERNAL LIGHT SWITCH FOR BRAAI - 1100mm	
	DISTRIBUTION BOARD	
	SANS 164-2 PLUG - 300mm	*
	SANS 164-2 PLUG - 1100mm	*
	POWER SUPPLY FOR EXTRACTOR FAN - 2100mm	*
	STOVE ISOLATOR SWITCH - 1100mm	*
	STOVE POWER SUPPLY - 600mm	*
	TV POINT - 300mm	

OPTION 1D



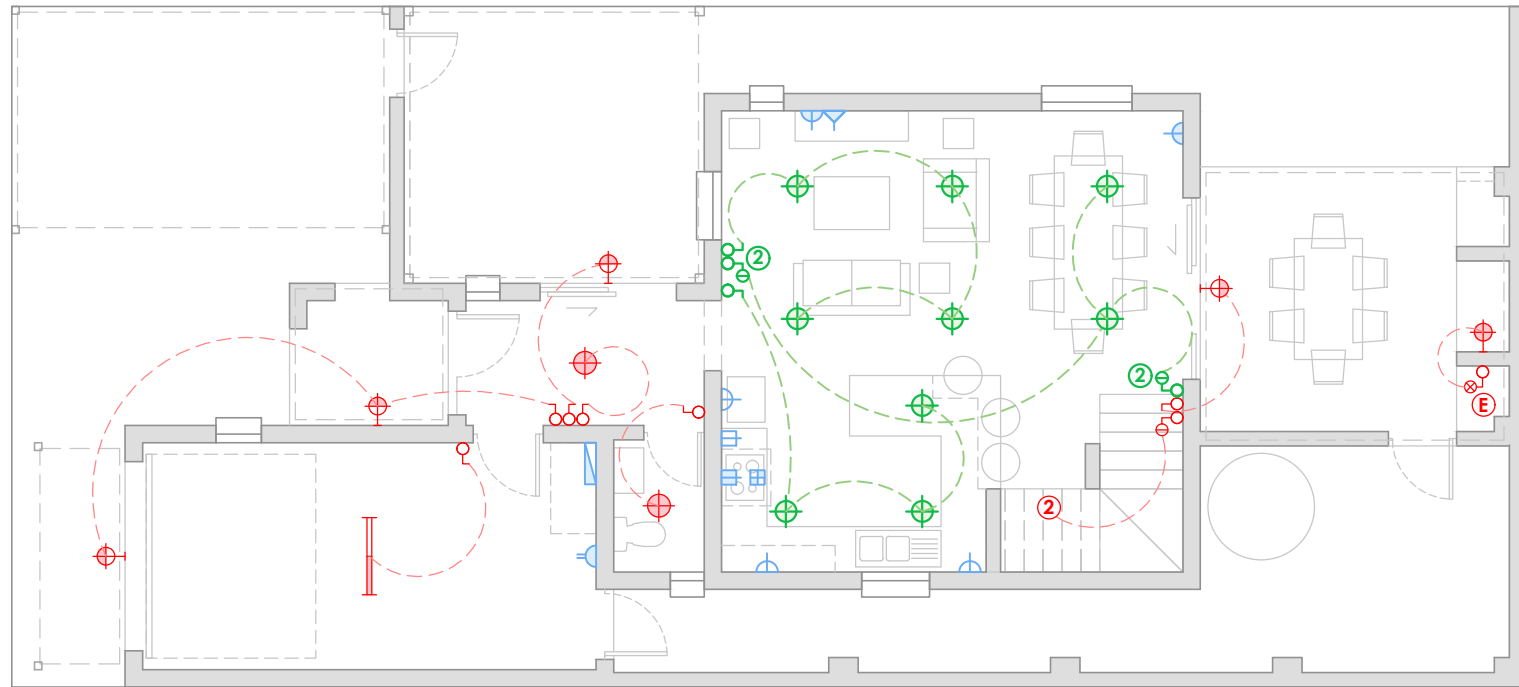
FIRST FLOOR

ALL HEIGHTS MEASURED FROM FINISHED INTERNAL FLOOR LEVEL (FFL)

* TO UNDERSIDE OF SWITCH PLATE

DISCLAIMER

Drawings for marketing purposes only and subject to design development by architect. Unit types are typical, and adjustments may need to be made pending orientation and location on Site Development Plan (SDP). Garage positions and paving to driveways may change, and unit types may be mirrored. Refer to SDP for final unit, garage, parking (carport), yard, gate and boundary wall orientation, size and positions. All plans, elevations, sections and specifications subject to final adjustments by architect. Areas shown on drawings are measured construction areas and may vary with 5%. Window and door sizes, positions and glazing may change, and extra shutters and double glazing may be added due to unit orientation and position on SDP and location of adjoining unit/s to comply with all Municipal Regulations and SANS 204 requirements. Any material changes to windows & doors shown on marketing material will be for purchaser's account. Levels shown on drawings are indicative. All levels to be finalized on site and adjustments to plans and levels shown on marketing material may need to be made to comply with SANS 10400. Widths, height, location and foundations for retaining walls are indicative and subject to structural engineer's design, level difference and finalisation of levels on site. Paving, tiling and landscaping indicative. Chimney and/or flue pipes shown on elevation only applicable when fireplace/internal combustion stove option is selected and additional extra for purchaser's account. All furniture, appliances, rainwater tanks indicative and not included in purchase price.



GROUND FLOOR